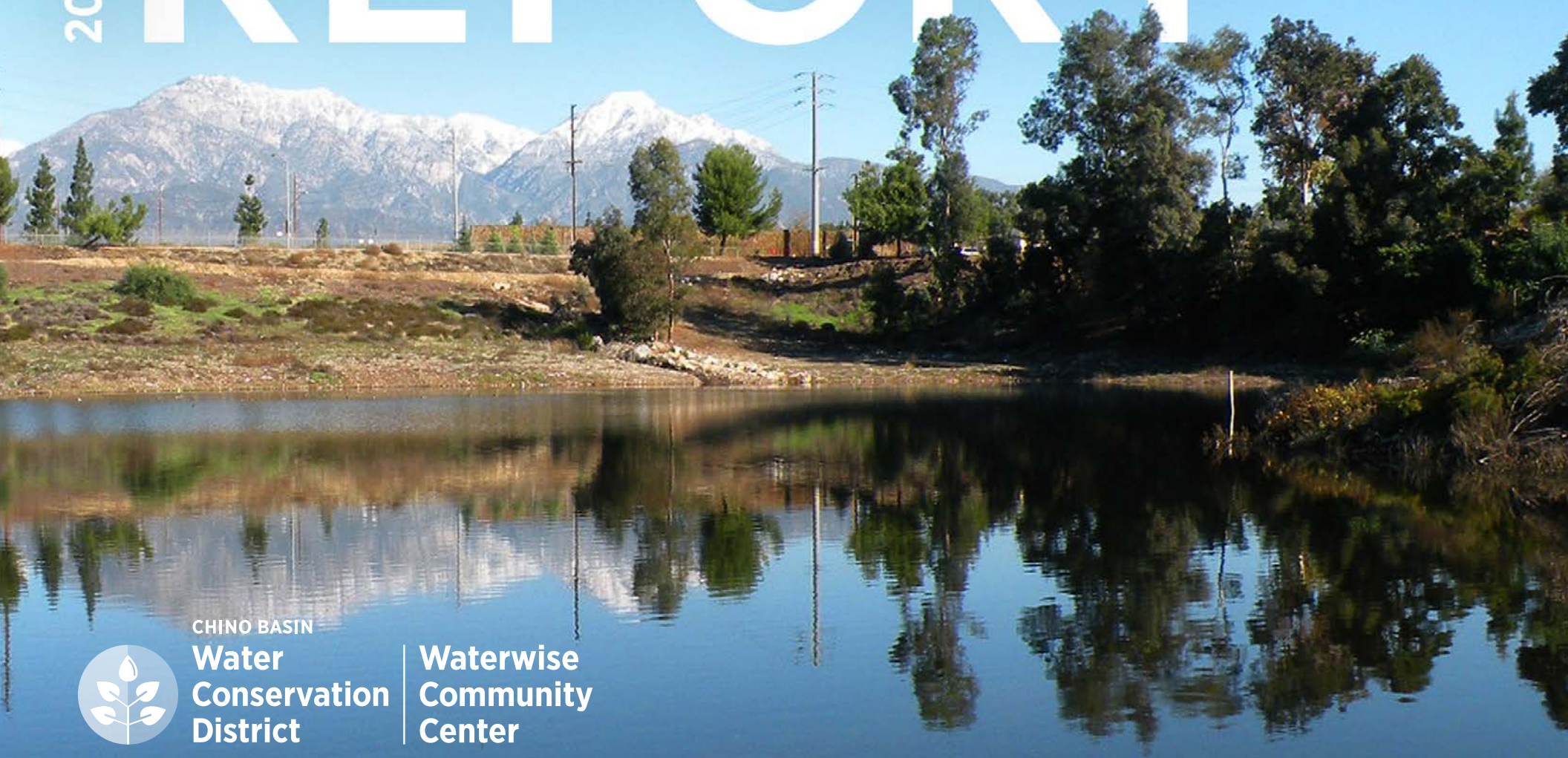


ANNUAL 2018-19 REPORT



CHINO BASIN
**Water
Conservation
District**

**Waterwise
Community
Center**



CONTENTS



**Waterwise
Community
Center**

ANNUAL REPORT, FISCAL YEAR 2018-19

- 2** Letter from the Director
- 4** About Us
- 6** By the Numbers
- 14** Earth Day
- 16** A Year in Photos
- 18** Spotlight Stories
- 20** Conservation Spotlight
- 22** Community Spotlight
- 24** Volunteers & Interns
- 26** The Team Behind Conservation
- 28** Governance
- 30** Join Us





LETTER FROM THE DIRECTOR

The year 2019 marks the 70th anniversary of the Chino Basin Water Conservation District (CBWCD). In the first half of the 20th century, the Chino Basin was an agricultural region, supporting citrus orchards, vineyards, and dairy farms. Every farm relied on well water for its operations, and that access to the aquifer allowed our region to flourish. In 1949, a group of farmers noticed that the water tables of the Chino Groundwater Basin were dropping, and they came together to form CBWCD. Water Conservation Districts are unique in California, as they serve the purpose of infiltrating water from rivers and streams into underground aquifers for future use. Here in the Chino

Groundwater Basin, many of the infiltration basins run along the San Antonio Creek Channel, which runs from the headwaters of Mount Baldy to the Prado Wetlands, joining the Santa Ana River and meeting the Pacific Ocean at Huntington Beach.

At first, CBWCD only captured stormwater from local watersheds, but in the past decades has worked in partnership with surrounding agencies to use its basins to infiltrate water from the State Water Project and recycled water from the Inland Empire Utilities Agency.

As the area urbanized, CBWCD also added services to reduce water demand by educating

residents on how to use water wisely. In the Chino Basin, single-family homes often use 60% or more of their water outside on landscapes, so CBWCD has built up a Conservation Programs Department with skilled horticulturalists, irrigation experts, and technicians to audit irrigation systems, train landscape professionals, and help homeowners transition to waterwise gardens. CBWCD offers multiple classes every month to homeowners, including specialty classes on topics such as how to properly water orchards and vegetable gardens, California Native gardening, and advanced irrigation for the home gardener.

Recognizing that attitudes toward conservation begin early in life, CBWCD has fully built out a popular field trip program, featuring half-day, hands-on STEM classes that are all aligned with Next Generation Science Standards. These classes are so popular that each semester's schedule is reserved within weeks of posting.

The Waterwise Community Center Demonstration Garden welcomes thousands of visitors each year and serves as a living classroom for adults and children alike. It is a place people can attend free of charge to see a variety of beautiful Water Wise plants in person to decide which might be right for their own home.

Our dedicated and passionate staff have a lot to be proud this past year, including:

- Completion of the State Street Storm Drain Inlet Improvement Project, increasing stormwater capture during weather events;
- Hosting a delegation from China to promote worldwide water conservation and discussing sustainable water management practices; and
- Over 113,383 visitors to the Inland Valley Garden Planner website, which helps residents select and learn to care for waterwise plants.

As we look to the future, we look forward to working in partnership with our sister agencies in the Chino Basin to protect our groundwater and in doing so, both the environment and the economic vitality of our region.

Sincerely,



Elizabeth Skrzat

EXECUTIVE DIRECTOR



ABOUT US

The Chino Basin Water Conservation District and Waterwise Community Center work to sustain a regional water supply through public stewardship by engaging in the following key strategies:

DEMONSTRATE

...the multiple benefits of water efficient landscapes to conserve water, capture stormwater, and use recycled and greywater while providing beautiful and inspiring places to live, work, and play.



EDUCATE

...to inspire the broad adoption of a water conservation ethic and ACTIVATE public stewardship and a water-efficiency workforce.



PERCOLATE

...stormwater and promote distributed onsite capture to replenish local groundwater supplies, ensuring our region's needs are efficiently met while improving regional water quality.



BY THE NUMBERS



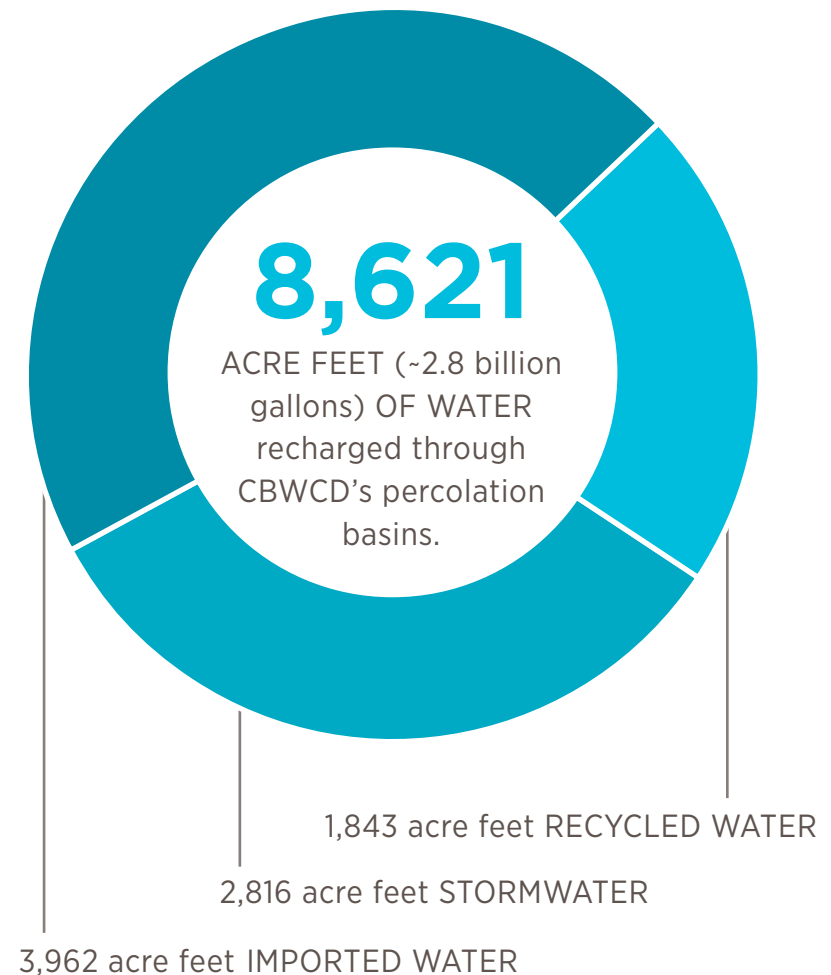
Numbers tell part of our story, but conservation is about more than numbers. It is a cultural shift that requires an integrated approach to carefully considered and diverse programming. With the ultimate goal of water conservation, our work is to inspire, equip, and support community members, professionals, and partners to make conservation a way of life.

1.2

MILLION RESIDENTS in Chino Basin served through CBWCD activities, including groundwater recharge.

2,341

GALLONS OF WATER recharged for each resident of the Chino Groundwater Basin. (Assuming a population of 1.2 million.)



DEMONSTRATION

15,491

IN-PERSON VISITORS to the Waterwise Community Center.

2.6

MILLION GALLONS (8.0 acre feet) OF WATER captured at the CBWCD demonstration garden, park, and parking lot.

K-12 EDUCATION

7,738

K-12 STUDENTS served by CBWCD Next Generation Science Standards-aligned youth education programs.

4,624

STUDENTS participated in Waterwise Community Center field trips.

886

ADULTS participated in CBWCD youth education programs as teachers or chaperones.



PERCOLATION

134

ACRES (5.8 million square feet) OF LAND maintained by the CBWCD staff for groundwater recharge.





RESIDENT EDUCATION

THIS YEAR, CBWCD CONSERVATION PROGRAMS PROVIDED:

161

LANDSCAPE EFFICIENCY AUDITS with potential to save

36.7

MILLION GALLONS (113 acre feet) of water per year.*

93

LANDSCAPE DESIGNS created from the Design Assistance Program for residents planning to convert to waterwise landscapes at home.*

35

RESIDENTIAL LANDSCAPE CLASSES that taught 893 Community Members waterwise landscaping and landscape maintenance skills.

1,177

COMMUNITY MEMBERS received free mulch to help with landscape water savings at mulch giveaways events.

*in collaboration with the Inland Empire Utilities Agency and area water providers.

CREATING PARTNERS IN CONSERVATION

TO MULTIPLY OUR IMPACT, BUILD REGIONAL CAPACITY & SUPPORT CAREER DEVELOPMENT

49

VALLEY VIEW HIGH SCHOOL HORTICULTURE STUDENTS earned Qualified Water Efficient Landscaper professional certifications through our collaboration with Chaffey Joint Union HSD.

29

MASTER GARDENERS & LANDSCAPE PROFESSIONALS earned Qualified Water Efficient Landscaper professional certifications.

67

LANDSCAPE PROFESSIONALS & MASTER GARDENERS attended CBWCD horticulture professional development workshops.



ONLINE OUTREACH

3,307

FOLLOWERS on Facebook, Twitter, and Instagram

44,916

WEBSITE VISITORS to cbwcd.org

113,386

WEBSITE VISITORS to inlandvalleygardenplanner.org



A young child with dark hair, wearing a blue denim jacket over a red shirt, is smiling and looking down at a small green seedling in a black plastic tray. The child is holding the tray with both hands. The background shows a paved patio area and a metal railing. The text "EARTH DAY" is overlaid in large white letters across the bottom of the image.

EARTH DAY

NEW FORMAT & SUCCESSFUL EARTH DAY CELEBRATIONS

The District's 27th Annual Earth Day Celebration was hosted at the Waterwise Community Center on April 9-11, 2019. Over 600 5th grade students rotated through three stations led by staff, teaching fellows, and interns which included designing and testing water filters, crafting seed bombs, and collecting data in the garden. Montclair High School and United Christian Academy volunteers provided additional support to facilitate discussions and serve as role models for the 5th graders.

Local organizations were also invited to participate as conservation heroes to expose students to different conservation related career pathways. One teacher commented, "listening to my students have conversations with the professionals was awesome. The professionals were so patient and kind."

In 2018, in an effort to create a more meaningful experience for participants, the Earth Day festival was revamped from one large-scale festival to three days of smaller, inquiry-driven, hands-on Earth Day sessions.

The new program was piloted April 11-13, 2018 and was a resounding success. The new program format was better aligned with Next Generation Science Standards, offered opportunities to students to design solutions and collect data, and provided opportunities for students to engage with partners from local water agencies and cities. "I felt it was very hands-on this year, never a dull moment, and the staff was very organized and answered any and all questions," commented one teacher.

Students made watershed models, designed water filters, and learned about plant adaptations firsthand with plants in the Waterwise Demonstration Garden. The changes were very popular with teachers. Another teacher who had participated said, "It was such an improvement from last year! I thoroughly enjoyed it and my students did, too!"



A YEAR IN PHOTOS





SPOTLIGHT STORIES



THE STATE STREET STORM DRAIN IMPROVEMENT PROJECT

In 2019, the District's Board of Directors authorized staff to have the State Street Storm Drain redesigned and rebuilt to specifications that would effectively capture more water and minimize any vandalism to the iron grates. Through a competitive bid process, a contractor was selected to perform the reconstruction of the drop gate inlet structure.

The District completed the State Street Storm Drain Improvement Project December 2018 at its Brooks Basin percolation basin. Brooks Basin is located in Montclair, north of State Street and the State Street Storm Drain (SSSD), south of Holt Avenue just east of the San Antonio Channel and west of Ramona Ave. It is a constructed basin built in 1978-79. The land area of Brooks Basin is 21 acres with a storage capacity of 503 acre-feet.

The SSSD is a water conveyance channel, which runs parallel with State Street from Mountain Avenue in Ontario and runs west connecting to the San Antonio Channel in Montclair. Within the SSSD, there is a constructed drop gate inlet that allows stormwater to enter Brooks Basin.

The past year has seen numerous storm events and the new improvements are effectively capturing more stormwater.





CONSERVATION SPOTLIGHT

LEADING WITH LANDSCAPE CONSERVATION EDUCATION

The Waterwise Community Center is one of the leading sources for home landscaping education in Southern California. In Fiscal Year 2018-2019, we hosted 893 participants at our skills-based gardening workshops. With seasonally relevant topics presented by expert staff instructors, community members can obtain the knowledge and learn the techniques necessary for the successful design, installation, and ongoing maintenance of beautiful and resource-conserving waterwise landscapes.

Primarily intended for a general audience, workshops are also attended by

professionals and students studying horticulture and landscape architecture who are looking to learn more about sustainable, waterwise, and California native landscaping. Workshops usually include both inspiring and informative lecture portions in the Waterwise Community Center's Board Room and outdoor "real-world" demonstrations in the Demonstration Garden. Programs are offered both on Saturday mornings and on weekday evenings and are often the first point of contact between the Waterwise Community Center and area residents. Residents then learn about and participate in our other services or use our other resources.



An underlying theme in most of our workshops is that moving to waterwise landscapes is not about making sacrifices, but rather is about embracing beautiful, locally adapted garden styles that provide more enjoyment and benefits than the higher water landscapes. In spreading this message through talks and active examples in our Demonstration Garden spaces, these workshops allow the Waterwise Community Center to function as a living laboratory of sustainable, water-efficient urban landscaping as we help facilitate the transition to conservation-focused landscapes across the region.

WORKSHOP TOPICS OFFERED IN FY 18/19:

- Landscape Transformation Basics & Rebates
- Removing Your Lawn – Four Methods to Kill Your Turf for New Plantings
- Fun with Flora: Herb Container Gardening (in collaboration with the San Bernardino County Master Gardeners)
- DIY Landscape Design
- Basic Irrigation Principles for the Home Landscape
- Favorite Waterwise Plant Selections for the Inland Empire
- Fun with Flora: Planting Succulents in Repurposed Pots (in collaboration with the San Bernardino County Master Gardeners)
- An introduction to California Native Gardens & Native Garden Design
- Installation, Establishment, & Maintenance of California Native Gardens
- Planning & Planting Your Delicious, Water-Efficient Winter Edible Garden
- Bird, Butterfly, & Native Bee Gardening with Native & Low Water Plants
- Fun With Flora: Succulent Wreath Making (in collaboration with the San Bernardino County Master Gardeners)
- Winter Pruning & Home Landscape Maintenance
- Purchasing & Planting Waterwise and Native Plants
- Introduction to Home Landscape Irrigation
- Fruit Trees for Home Gardens – The Tastiest Varieties & Most Efficient Approaches for the Inland Empire
- Advanced Home Landscape Irrigation & Troubleshooting
- Plant Propagation: Seeds, Cuttings, & Grafting
- Raised Bed Construction & Container Gardening
- Spring & Summer Edible Gardens – Planning & Planting for a Water Efficient & Delicious Harvest
- Mulching & Composting for the Waterwise Garden
- Rainwater Harvesting for Home Landscapes



COMMUNITY SPOTLIGHT

MULCH & COMPOST GIVEAWAY PROGRAM

In 2015, the District initiated a Mulch and Compost Giveaway program for the public in partnership with the Inland Empire Utilities Agency and Green Army Waste Recycling of Montclair. It is a free service to residents that occurs on the first and third Saturdays of the month. The participants are able to load their trucks, containers, and bags while District staff manages and monitors the parking, loading, safe entry, and exiting.

As residents bring their mulch and compost home to incorporate into their gardens and landscape, they are providing a wealth of benefits. These benefits include:

- Water conservation
- Improved soil structure and environment for beneficial soil flora
- Improved drainage for clay-like soils
- Improved water retention in sandy soils
- Increased fertility of soils
- Reduced landfill waste

During Fiscal Year 2018-2019, 1,177 participants took advantage of this free District program with a total of approximately 644 cubic yards of mulch, and 517 cubic yards of compost given away.





VOLUNTEERS & INTERNS

VOLUNTEERS AT THE WATERWISE COMMUNITY CENTER

Volunteers are a critical component to the success of many of our programs and events. Programs such as Scout Days, Earth Days, Summer Camp, Open House and the Landscape and Water Conservation Festival would not be possible without the support of our wonderful volunteers. During 2018-2019, 200 individual volunteers contributed over 2,000 hours to support community events and programs at the Waterwise Community Center. We want to thank all our wonderful volunteers!

CBWCD INTERNS

SAWPA DISADVANTAGED COMMUNITIES INVOLVEMENT PROGRAM

Ana Mejia
SAN JACINTO COMMUNITY COLLEGE

Laura Rodriguez
MT. SAN ANTONIO COLLEGE

Daniella Moncayo
CAL POLY POMONA

Michelle Shanahan
CAL POLY POMONA

POMONA COLLEGE

Sophie Janssen

Sara Sherburne

ENVIRONMENTAL EDUCATION FELLOWS - UNIVERSITY OF REDLANDS

Adriana Beltran

Jacob Hanneman

Philip Srulevitch

Amy Hallback



THE TEAM BEHIND CONSERVATION

THE CHINO BASIN WATER CONSERVATION DISTRICT STAFF

Fourteen hardworking staff in the Administrative, Conservation Programs, Community Programs, and Facilities and Operations Departments work with passionate dedication to serve the Chino Basin community.



DEPARTMENTS

ADMINISTRATION

Elizabeth Skrzat, Judith Taylor

CONSERVATION

Scott Kleinrock, Brandon Burgess,
Daniel Moreno

COMMUNITY PROGRAMS

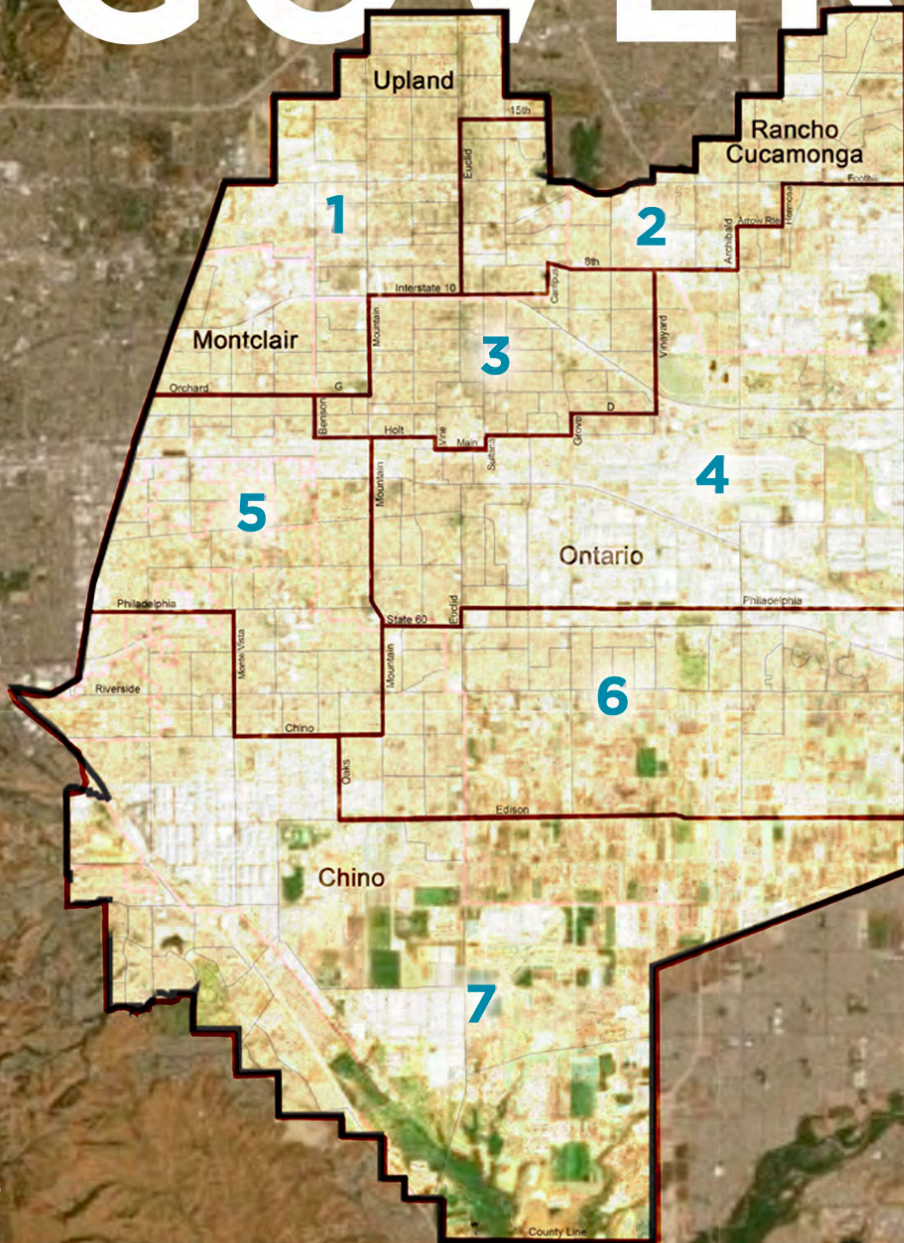
Maia Dean, Omone' Abu, Monica
Curiel, Jenna Hoover, Billy Mercado

FACILITIES & OPERATIONS

Dave Shroeder, Robert Sotomayer,
James Salcido, Dani Moncayo



GOVERNANCE



The Chino Basin Water Conservation District, incorporated on December 6, 1949, is an independent special district that operates under the authority of Division 21 of the California Water Code. Located in the western region of San Bernardino County, California, the District encompasses the entire cities of Montclair and Chino, and portions of the cities of Chino Hills, Upland, Ontario, Rancho Cucamonga, and some of the unincorporated areas of western San Bernardino County. The District is governed by an elected seven-member Board. Each Director must reside within the geographical area established for their respective Divisions.



CBWCD BOARD OF DIRECTORS

Terence M. King – Division 1
BOARD PRESIDENT

Margaret Hamilton – Division 3
BOARD VICE PRESIDENT

Marc Grupposso – Division 2
BOARD TREASURER

Mark Ligtenberg – Division 4

Gil Aldaco – Division 5

Dr. Hanif Gulmahamad – Division 6

Ryan Sonnenberg – Division 7



JOIN US!

With many exciting projects and programs planned for FY 2020, we invite you to participate as one of our valued community partners. Join us as a participant in a workshop, symposium, or program; a user of our conservation resources; or a collaborative partner in community-based conservation. Here are just a few projects we are looking forward to next year:

- Welcoming new audiences to take advantage of the Waterwise Community Center and its resources.
- Incorporating additional programming and content in both English and Spanish.
- Finding additional opportunities to train the next generation of landscape professionals and educators.
- Developing a Saturday Children's Program educational series.



CONNECT WITH US!

cbwcd.org | [@CBWCD](https://www.instagram.com/CBWCD)





CHINO BASIN
**Water
Conservation
District**

**Waterwise
Community
Center**